



SPARE PARTS MANUAL

FOR

40'x8'x13'6 "

(FLATRACK COLLAPSIBLE CONTAINER TYPE 18)

HanJin



GUANGDONG XINHUI CIMC SPECIAL TRANSPORTATION EQUIPMENT CO.,LTD.

ISSUE DATE: May. 21, 2008

3.52 Version Super Rack
SPARE PARTS MANUAL

Issue A

Issue date: May. 21, 2008

INDEX

INTRODUCTION	Page 4
1) INNER HINGES	Page 5
2) OUTER HINGES	Page 5
3) TAPER PINS	Page 6
4) PIVOT PIN	Page 6
5) XL LOCKING HAMMER	Page 7
6) TWISTLOCK.....	Page 8
7) COUNTERBALANCE SPRING.....	Page 8
8) CUSHIONING CYLINDER.....	Page 9
9) CYLINDER PINS.....	Page 10
10) END WALL PARTS.....	Page 11
APPENDIX - ORDER FORM.....	Page 13

INTRODUCTION

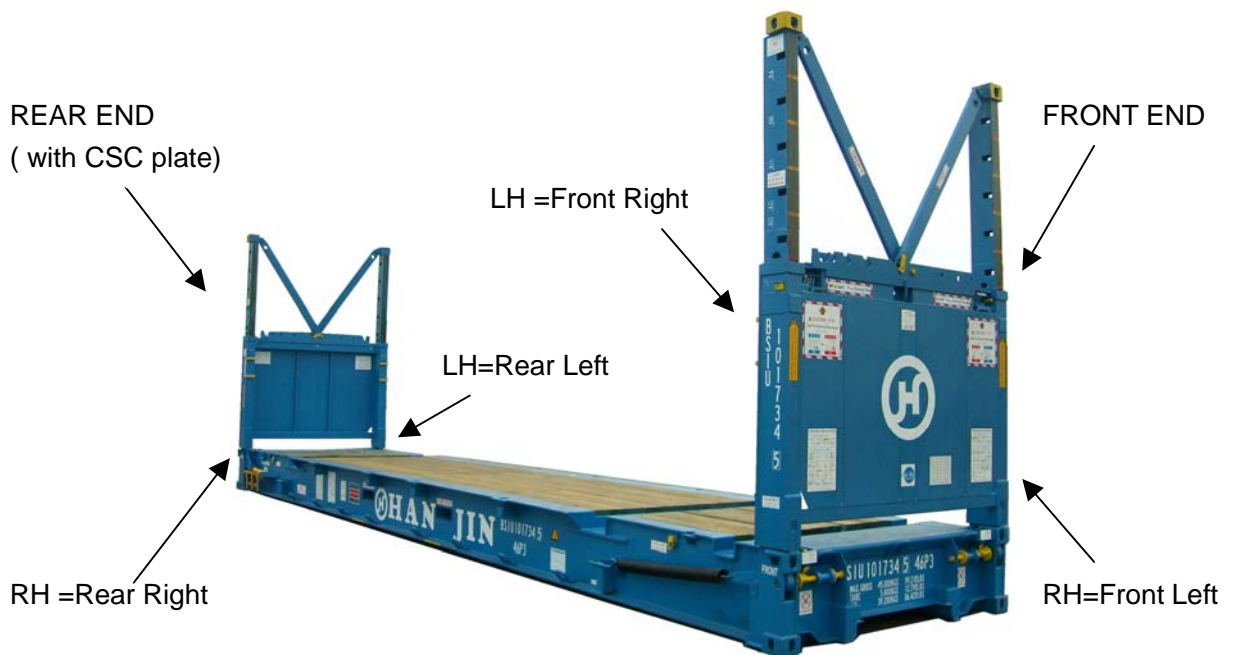
This manual is for the purpose of better identification to the spare parts, Please read this introduction carefully before put an order of spare parts.

Super rack, a 45 tonne rated 40' flatrack, is specially developed for over height cargoes.

When any part is needed, please identify whether it's left hand or right hand by following method:

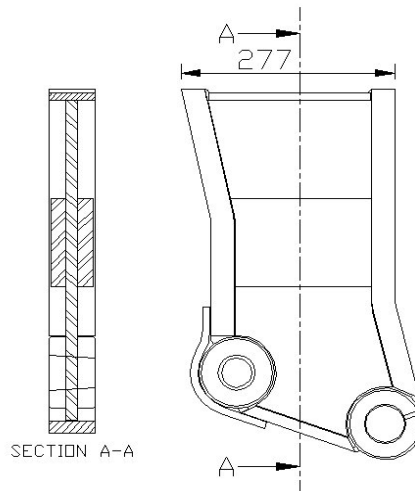
LEFT or RIGHT

You must identify if the part is left hand or right hand. By IICL convention, you can identify the part by combination of Front/Rear with Left/Right. Or you can simply do the same by LH/RH as defined by following diagram. For example, if you tell us "Front Left", we know you use IICL convention which is the same as our "RH"; if you tell us "RH", we know you mean "Front Left" or "Rear Right" which is the same part.



With this manual, you can always find the correct part, just fill in the blanks in the appendix order form, send to Guangdong Xinhui CIMC Special Transportation Equipment Co. Ltd.

1) INNER HINGES

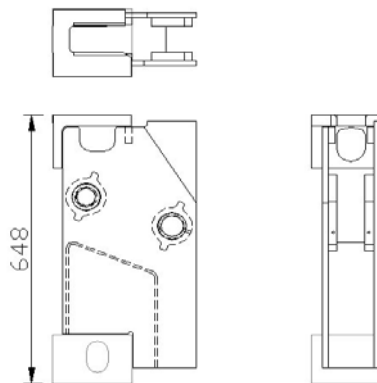


1. Part Name : **XL Inner Hinge**

Drawing No.: Inner (260) XL v3.3

Weight: 33.4kg

2) OUTER HINGES

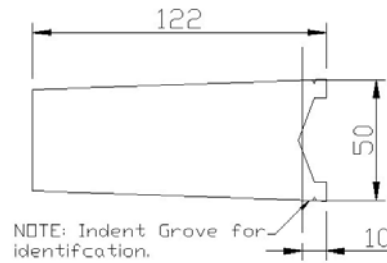


2. Part Name : **XL Outer Hinge**

Drawing No.: Outer (648) XL v3.4

Weight: 37.7kg

3) TAPER PINS

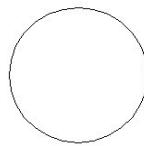
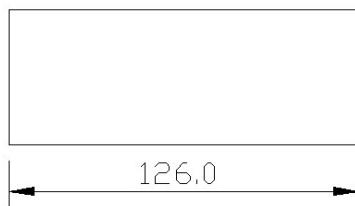


3. Part Name: **Taper Pin**

Drawing No.: CC101-32
(begin to use this type from 2008)

Weight: 1.55 kg

4) PIVOT PIN

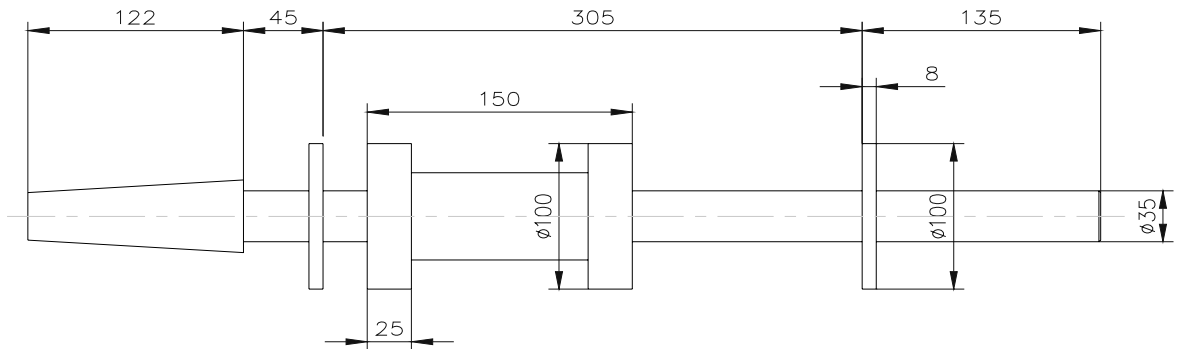


4. Part Name : **Pivot Pin**

Drawing No.: CC200

Weight : 1.94kg

5) XL LOCKING HAMMER



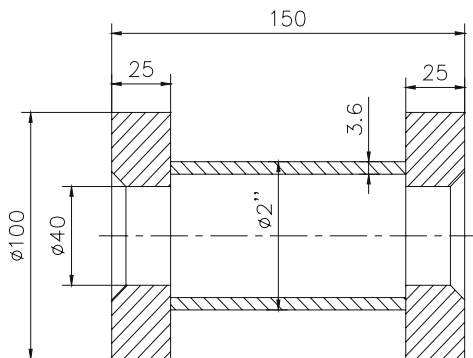
5 Part Name: XL Locking Hammer

Drawing No.: FR-32-XL
(begin to use this type from 2008)
Weight: 8.8kg



6. Part Name : Striker Plate

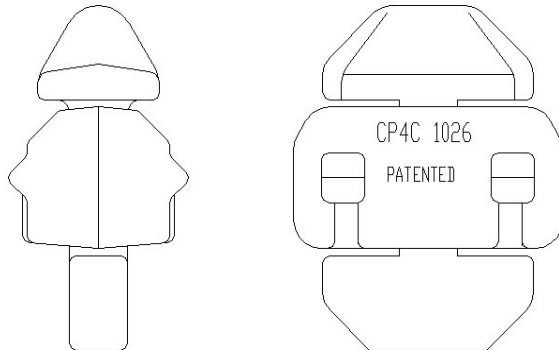
Drawing No.: FR-ST-2
Weight: 0.43kg



7. Part Name: Standard Hammer

Drawing No.: FR-SP.1
Weight: 2.98 kg

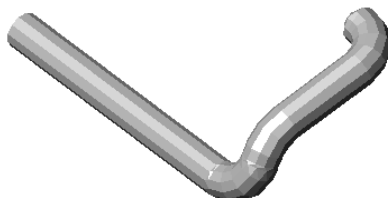
6) TWISTLOCK



8 Part Name : **Twistlock**

Drawing No.: CP4C-1026

Weight: 3.1kg



9. Part Name : **Twistlock Arm (Bar)**

Drawing No.: FR-ST-1

Weight: 0.81kg

7) COUNTERBALANCE SPRING

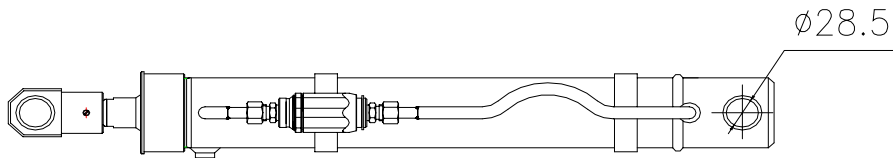
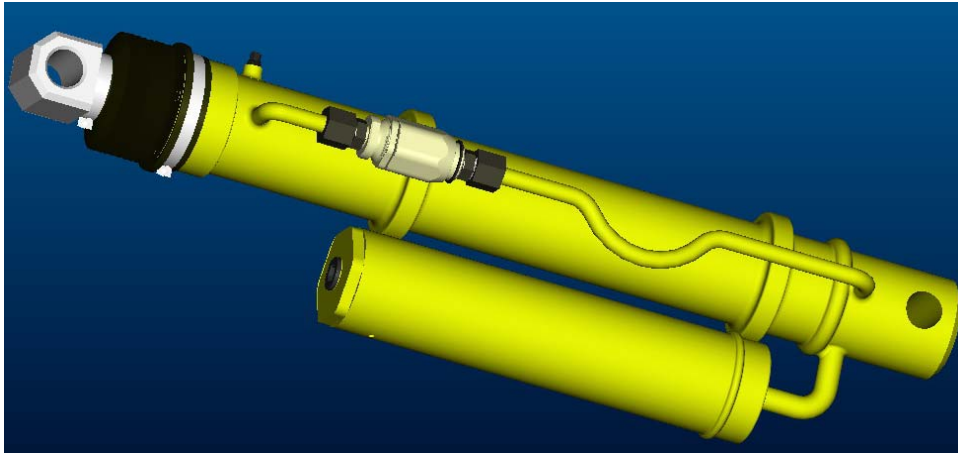


10. Part Name : **Counterbalance Spring**

Drawing No.: P010

Weight: 23kg

8) CUSHIONING CYLINDER



11. Part Name : **Cushioning Cylinder--655**

Weight: 18.6kg



12. Part Name : **Piston-rod head (∅ 28)**



13. Part Name : **Ligature--Large**

Weight: 0.07kg



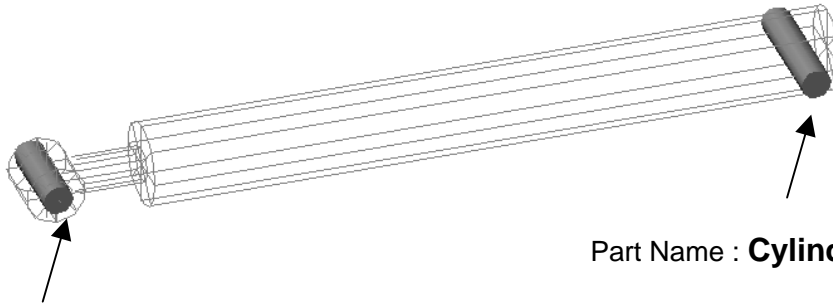
14. Part Name : **Ligature--Small**

Weight: 0.06kg



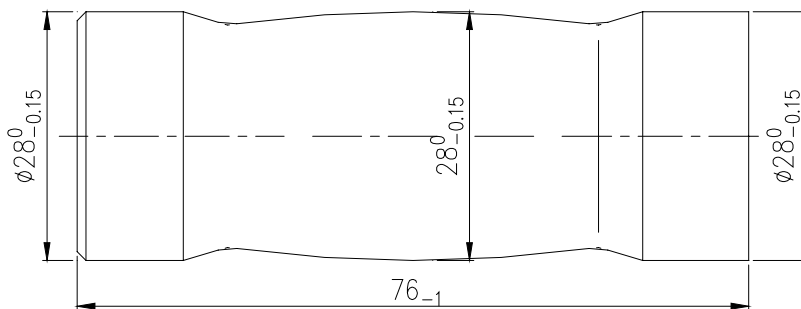
15. Part Name : **Piston-rod protector- 655**

9) CYLINDER PINS



Part Name : **Cylinder Front Pin**

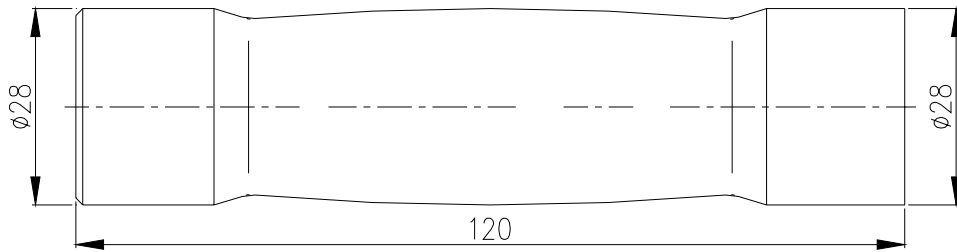
Part Name : **Cylinder Rear Pin**



16. Part Name : **Cylinder Front Pin (S76-type 2)**

Drawing No.: 40FR18G.1-1 (S76-type 2)

Weight: 0.365kg

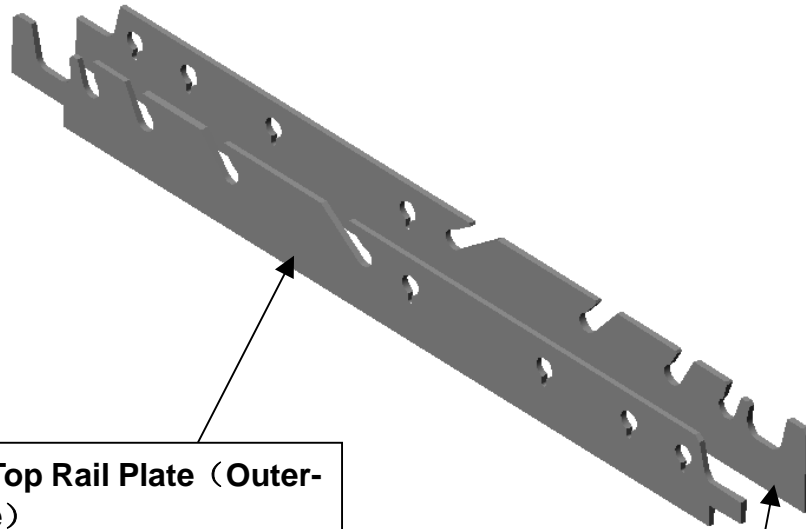


17. Part Name : Cylinder Rear Pin (L120)

Drawing No.: 40FR18G.2-1 (L120)

Weight: 0.5kg

10) END WALL PARTS



18. Part Name : Top Rail Plate (Outer-open end type)

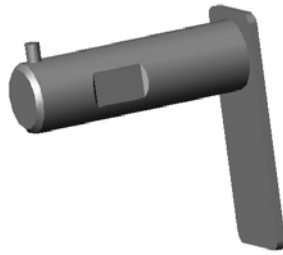
Drawing No.: 40FR18E.4-3

Weight: 26.43kg

19. Part Name : Top Rail Plate (Inner-open end type)

Drawing No.: 40FR18E.4-4

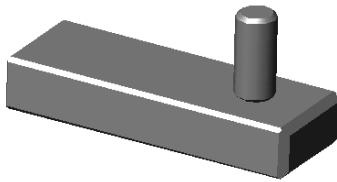
Weight: 27.08kg



20. Part Name : **Bracer Pin**

Drawing No.: 40FR18E.9

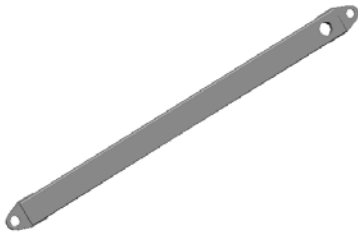
Weight: 1.50kg



21. Part Name : **Post Locking Pin**

Drawing No.: 40FR18E.11

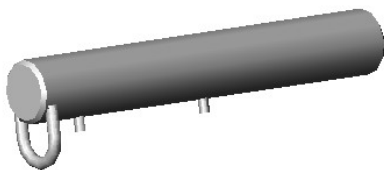
Weight: 6.07kg



22. Part Name : **Diagonal Bracer Bar**

Drawing No.: 40FR18E.2

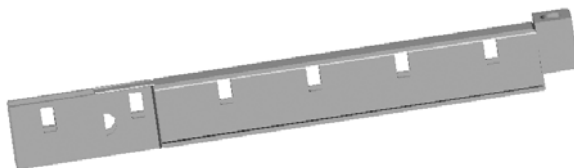
Weight: 16.01kg



23. Part Name : **End Wall Support (type 2)**

Drawing No.: 40FR18G.3 (type 2)

Weight: 5.14kg



24. Part Name : **Inner Post**

Drawing No.: 40FR18E.1

Weight: 105.34kg

Appendix

ORDER FORM page 1

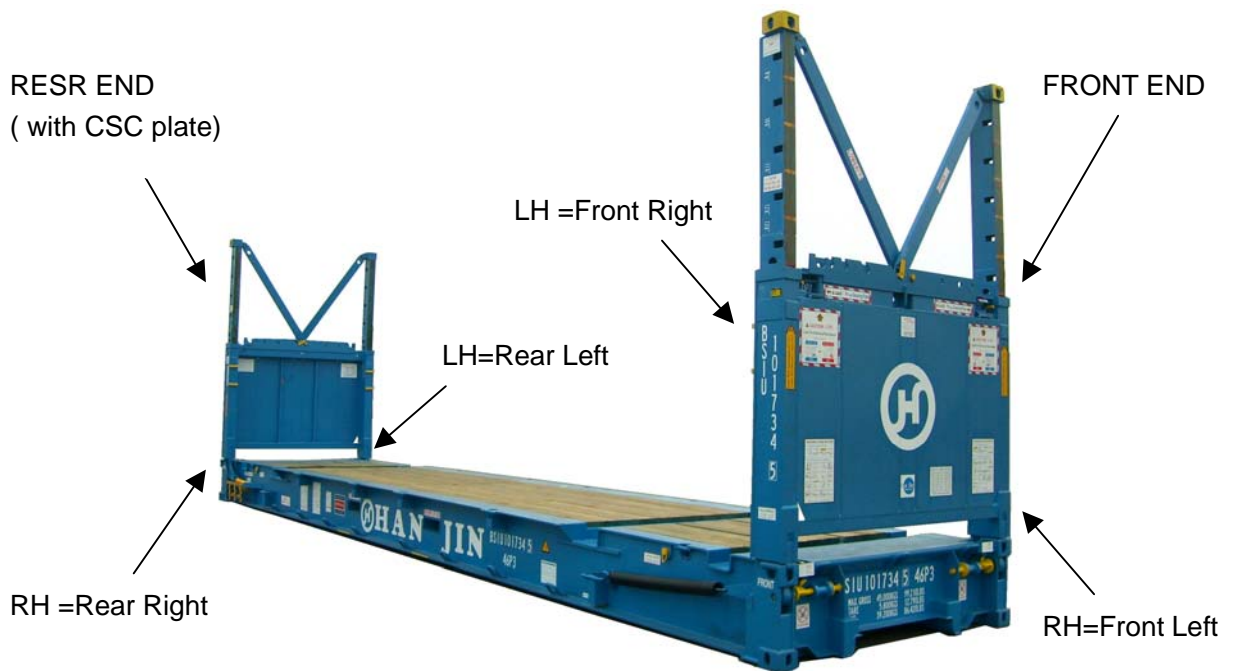
No.	Part Name	Part Drawing Number	Taper Pin Length	Serial Numbers of Flatrack	Quantity	
					LH	RH
1	XL Inner Hinge	Inner 260 XL v3.3	122			
2	XL Outer Hinge	Outer 648 XL v3.4	122			
3	Taper Pin	CC101-32	122			
4	Pivot Pin	CC200				
5	XL(32) Locking Hammer	FR-32-XL	122			
6	Striker Plate	FR-ST-2				
7	Standard Hammer	FR-SP.1				
8	Twistlock	CP4C-1026				
9	Twistlock Arm (Bar)	FR-ST-1				
10	Counterbalance Spring	P010				
11	Cushioning Cylinder- 655					
12	Piston-rod head (∅ 28)					
13	Ligature--Large					
14	Ligature--Small					
15	Piston-rod protector					
16	Cylinder Front Pin (S76-type 2)	40FR18G.1-1 (S76-type 2)				
17	Cylinder Rear Pin (L120)	40FR18G.2-1 (L120)				
18	Top Rail Plate (Outer-open end type)	40FR18E.4-3				
19	Top Rail Plate (Inner-open end type)	40FR18E.4-4				
20	Bracer Pin	40FR18E.9				
21	Post Locking Pin	40FR18E.11				
22	Diagonal Bracer Bar	40FR18E.2				
23	End Wall Support-type 2	40FR18G.3 (type 2)				
24	Inner Post	40FR18E.1				

NOTE: 1, No need to fill in black blanks.

2, Before fill in this form, please read following comments carefully.

LEFT or RIGHT

You must identify if the part is left hand or right hand. By IICL convention, you can identify the part by combination of Front/Rear with Left/Right. Or you can simply do the same by LH/RH as defined by following diagram. For example, if you tell us "Front Left", we know you use IICL convention which is the same as our "RH"; if you tell us "RH", we know you mean "Front Left" or "Rear Right" which is the same part.



More information can be obtained from: <http://www.flatrackspares.com/>